



sonicaid® Transducers

HIGH RISK FETAL MONITORING MADE EASY

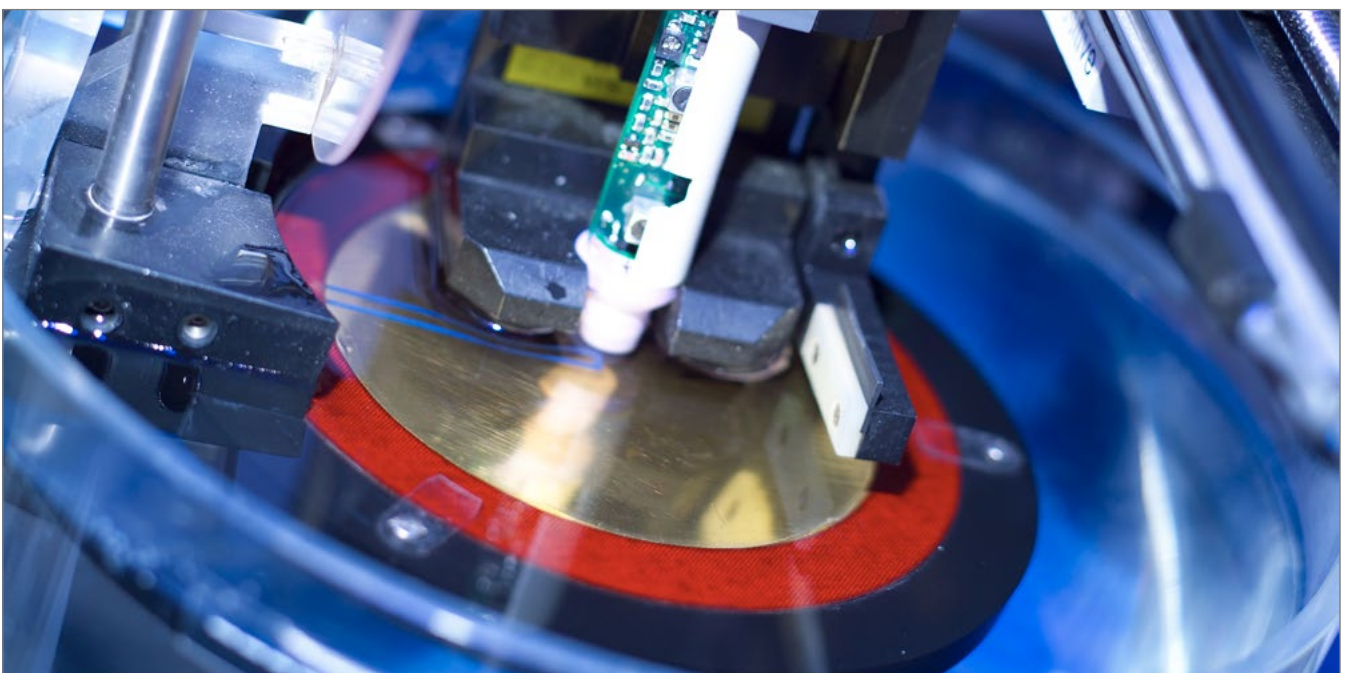
Precision by Huntleigh

Sonicaid, the technology behind the performance. The exceptional build standard and quality of our Sonicaid products not only give outstanding performance, but also durability and an extended product life.

Our high sensitivity ultrasound transducers and probes ensure optimum clinical performance even with difficult assessments such as early gestation or raised BMIs.

Huntleigh's Sonicaid range leads the world in innovation, sensitivity, quality and reliability and provides the widest choice of Dopplers and Fetal Monitors available. Combined with our new high sensitivity probes and transducers, this ensures the very best in performance at all stages of pregnancy.

Our unrivaled knowledge and expertise in monitoring is reflected in our latest fetal monitoring, such as our TEAM3 range which incorporates revolutionary patented ultrasound technology providing the user with an unsurpassed fetal and feto-maternal monitoring range.







Designed for comfort and performance

Our unique slim line ergonomic transducer design has been developed to maximise performance without compromising comfort. The lightweight design and secure belt button fastening reduce transducer drag, aiding continuous contact with the fetus.

The ultrasound transducer is designed to retain gel for continued performance, while the watertight seal allows easy cleaning for improved infection control, essential for the modern fetal monitoring environment.



Clinicians report a wide range of benefits including:

- Improved monitoring experience for mothers
- Reduced need for invasive FECG monitoring
- Reduced costs
- Reduced risk of infection and cross contamination



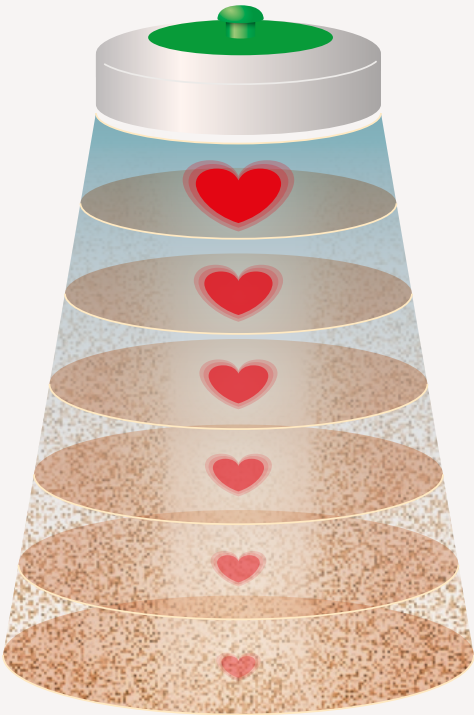
"Great performance fetal monitoring, even when used on women with a high body mass index (BMI)... Reduces the need for invasive procedures"

Quick and easy to locate the fetal heart signals

Wide beam ultrasound technology has resulted in a wider, deeper, uniform beam shape, coupled together with TEAM3's superb digital Doppler audio, enables clinicians to quickly and easily locate and maintain contact with the fetal heart beat. Especially when monitoring high BMI cases.

Our TEAM3 and fetal monitors incorporate unique patented technology to ensure accurate tracking in the most demanding of circumstances, minimising the requirement for invasive fetal ECG monitoring.

- Our patented 'Locate and Track' technology locks onto the fetal heart for optimum pick-up and reduces risk of misinterpretation due to maternal heart rate pick-up
- Reduces need to reposition transducers
- Excellent trace quality



Great performance fetal monitoring, even when used on ladies with a high body mass index (BMI)

"This machine is an excellent addition to any maternity unit, in particular ease of auscultation on women with high BMI"

Michelle Jones, Midwife

"We have been delighted with their performance, in particular, when used for our ladies with a high Body Mass Index (BMI) of which we are seeing increasingly more.

The sensitivity is noticeably better than the machines we were formerly using. Another marked improvement for us, is in the monitoring of twin pregnancies. We have been able to achieve a very satisfactory quality even with twins and in some cases of quite an early gestation (ie twins of 28 and 31 weeks).

I believe our manager has ordered more of the same model for our Delivery Suite and I know the midwives there will find them of great benefit and have no difficulty in using them."

Rachel-Ann Ellison, Midwifery Sister

"Extremely positive feedback, sensitive for the high bmi ladies; easy to use;"

Gillian Singleton, Senior Midwife

"I am writing to give you some feedback on the new CTG monitors we have recently purchased FM830 Encore. I have found that they have excellent sensitivity to the fetal heart rate.

This is especially helpful in women with a large BMI or of babies in an OP position in labour.

In my clinical experience these monitors have reduced my need to use a fetal scalp electrode."

Rachel Pressley, Senior Midwife/Supervisor of Midwives

"Didn't need to use FSE [Fetal Scalp Electrodes] on high BMI women - managed to keep external monitoring"

Moira Broadhead, Midwife

"BMI [of] 47 was recorded well"

Lorraine Tomlinson, Labour Ward Coordinator

The Sonicaid TEAM3 range of Fetal monitors replaces the FM800 series and incorporates exactly the same patented technology and transducers, with further improvements in performance.

"Great performance reduces the need for invasive procedures"



The science behind the performance



Our most efficient ultrasound crystal design

Fetal monitor transducers use special crystals to transmit & receive the ultrasound signal. There is a general perception, encouraged by some manufacturers, that the more crystals you have, the better. Claims of ultrasound performance based on the number of crystals used are very misleading as this is just one part of a very complex overall picture.

With over 40 years' experience in using Doppler ultrasound for fetal heart detection, Huntleigh, working with the world-leading ultrasound experts, the National Physics Laboratory (NPL), have researched this extensively.

From this research, using advanced design & modelling tools, we've developed what we believe to be the most effective and efficient beam profile and crystal design possible. This latest design uses 8 crystals – there are transducers on the market with more (as many as 12), but our research concluded that our 8-crystal design, together with the many other factors influencing transducer design, gave the best possible performance.

However, great performance is not achieved just by having the best transducer. Optimising the ability to receive & process the tiny reflected Doppler signals, & filter out the much larger noise signals, can have much greater impact on overall performance.

In common with other manufacturers, we employ range gating techniques to “zero in” on where we think the true FHR signal is located. However, unlike others, we never lose sight of the possibility that we may have locked onto the wrong signal.

In addition to this range-gating, we've developed uniquely powerful, patented “Locate & Track” software which is constantly working in the background to optimise the fetal signal & minimise artefact signals, such as maternal signals, that might otherwise interfere with the fetal signal.

This significantly reduces the risk of false maternal tracking that some products are prone to, without resorting to expensive added hardware to address this problem.

Our TEAM3 range of fetal monitors incorporate all of these state of the art developments, delivering our best-ever performing fetal monitors. The feedback we get from customers reflects the success of this significant investment in research and development, achieving an unparalleled level of ultrasound performance, including those difficult to monitor high BMI mums.

Unprecedented performance on mums with BMIs as high as 60+ reflect the success of this investment.



As a proud member of the Arjo family, we have been committed to supporting healthcare professionals in improving outcomes and enhancing patient wellbeing since 1979. We do this through our proven solutions for Vascular Assessment & Treatment and Fetal & Patient Monitoring. With innovation and customer satisfaction as our guiding principles, we strive for clinical excellence and improved performance, for life.

Manufactured and distributed by Huntleigh Healthcare Ltd.
35 Portmanmoor Road, Cardiff, CF24 5HN, United Kingdom
T: +44 (0)29 20485885 sales@huntleigh-diagnostics.co.uk
www.huntleigh-diagnostics.com

Registered No: 942245 England & Wales. Registered Office:
ArjoHuntleigh House, Houghton Hall Business Park, Houghton Regis, Bedfordshire, LU5 5XF
©Huntleigh Healthcare Limited 2019

A Member of the Arjo Family

® and ™ are trademarks of Huntleigh Technology Limited

As our policy is one of continuous improvement, we reserve the right to modify designs without prior notice.

AW: 1001043-2

