



sonicaid®
Fetal Dopplers

Introducing
a new
dimension in
sound and
vision

HUNTLEIGH
A MEMBER OF THE ARJO FAMILY

Sonicaid® SR Digital Dopplers

Visual confirmation of fetal heart sounds to enhance clinical assessment.



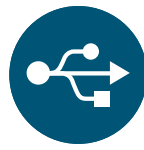
Multi Functional FHR Display

- Toggle between Big Numbers and Trace Displays
- High contrast colour display with wide viewing angle



Audio Output

- Headphone connection socket



Connectivity

- USB port for communication with viewing and archiving software



Integrated Charging

- Convenient charging via USB port



Data Storage On Micro SD Card

- Store both Trace and Audio files for playback or download to our viewing & archiving software (option)



Hear the Difference

- Digital sound processing enables our new DDNR system to reduce the background hiss and the gel filter reduces the loud crackle when gel is applied



Integrated Belt/Pocket Clip

- For convenient carrying and storage



High Sensitivity Probes

- Calibrated and fine-tuned to provide excellent performance over a wide gestational age & BMI range.



Probe Parking

- Protection when probe not in use



Waterproof Probes

- Choose between 2 or 3 MHz probes:
 - Fixed waterproof (IPX7) probe (SR2/SR3)
 - Interchangeable non-waterproof probes (SRX only - probe sold separately)

The Sonicaid Obstetric Doppler Series

With over 40 years' experience in fetal monitoring our technological innovations have enabled us to develop a new digital platform for our latest Doppler range. This generation of Doppler combines excellence in probe performance with digital signal processing to provide superb digital audio using our unique Dynamic Digital Noise Reduction (DDNR) system.

Our latest digital algorithms optimise FHR performance and the high resolution colour display includes new Big Numbers & Trace Display modes. Doppler sound recording, on-screen trace review and playback are just some of the many new features in this state of the art digital Doppler unit.



FHR Alerts

Indicates whether fetal heart rate is within the user defined range.



Educational Resource Tool

Sounds and traces stored on the optional SD card can be played back and reviewed for training purposes.



Fetal Movement Markers

Record fetal movement directly onto the trace.



Labour Auscultation Timer

A unique 15-minute timer function for use in managing low risk labour, where guidelines recommend performing a Doppler examination every 15 minutes.



Documentation

Archive traces and sounds to our software package providing a record of intermittent auscultation.



FHR Signal Strength Indicator

Gives confidence of probe positioning for optimal fetal heart rate detection.



Accessories

The Sonicaid SR Dopplers are supplied with:

- Carry bag
- 60g Tube of ultrasound gel
- 2 x AA Rechargeable batteries and recharging kit, or 2x AA Alkaline batteries
- IFU

Optional accessories include:

- ACC52-2 - Mobile Doppler stand
- ACC227 - Micro SD card
- ACC3 - Ultrasonic gel (box 12x250ml bottles)
- ACC24 - Ultrasonic gel (box 12x60g tubes)
- ACC21 - Headset

Sonicaid FD1 / FD3 Dopplers

Rate display fetal Dopplers with fixed 2 or 3 MHz waterproof probe.



Large Monochrome Display

- BIG Numbers fetal heart rate display
- Heartbeat and battery indicators



Audio Output

- Headphone connection socket



High Sensitivity Probes

- Calibrated and fine-tuned to provide excellent performance over a wide gestational age & BMI range



Controls

- Combined Power ON/OFF/Volume control for ease of use



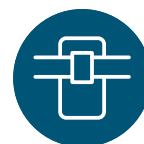
Hear the Difference

- High quality audio with analogue noise reduction



Probe Parking

- Protection when probe not in use



Integrated Belt/Pocket Clip

- For convenient carrying and storage



Accessories

The Sonicaid FD1/FD3 Dopplers are supplied with:

- A choice of 2 or 3MHz fixed waterproof probe
- 2 x 20g Sachets of ultrasound gel
- 2 x AA Alkaline batteries
- IFU

Optional accessories include:

- ACC34 - Soft carry pouch
- ACC52-2 - Mobile Doppler stand
- ACC3 - Ultrasonic gel (box 12x250ml bottles)
- ACC24 - Ultrasonic gel (box 12x60g tubes)
- ACC21 - Headset

Sonicaid D920/D930 Dopplers

Audio only fetal Dopplers with fixed 2 or 3 MHz waterproof probe.



LED Indicators

- Lights for clear visual indication of Power ON/OFF and battery status



Audio Output

- Headphone connection socket



High Sensitivity Probes

- Calibrated and fine-tuned to provide excellent performance over a wide gestational age & BMI range



Controls

- Combined Power ON/OFF/Volume control for ease of use



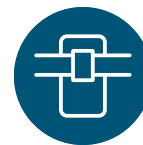
Probe Parking

- Protection when probe not in use



Hear the Difference

- High quality audio with analogue noise reduction



Integrated Belt/Pocket Clip

- For convenient carrying and storage



Accessories

The Sonicaid D920/D930 Dopplers are supplied with:

- A choice of 2 or 3MHz fixed waterproof probe
- 2 x 20g Sachets of ultrasound gel
- 2 x AA Alkaline batteries
- IFU

Optional accessories include:

- ACC34 - Soft carry pouch
- ACC52-2 - Mobile Doppler stand
- ACC3 - Ultrasonic gel (box 12x250ml bottles)
- ACC24 - Ultrasonic gel (box 12x60g tubes)
- ACC21 - Headset

Precision by Huntleigh

Fine tuned for optimum performance throughout pregnancy.

Huntleigh's precision engineering and fine-tuning of every component produces a sound and sensitivity that gives clinicians clarity and accuracy like no other Doppler.

A choice of 2 or 3MHz high sensitivity ultrasound probes ensures optimum clinical performance even when used in assessments such as early gestation or raised BMIs.

Why choose a 2MHz or 3MHz probe?

Every pregnancy is different, therefore having a choice of probe options allows clinicians flexibility when monitoring.

A lower frequency probe such as 2MHz has greater penetration and is typically used in mums with a high BMI, whereas a 3MHz probe with a shorter depth of penetration is often used for early gestation.

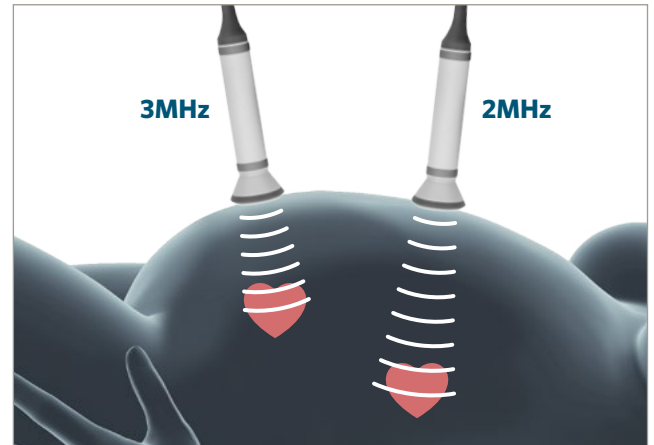


Image for illustration purposes only



Documentation and Archiving

Software

The latest SR range of Sonicaid Fetal Dopplers can be connected to our unique Sonicaid software solutions via a USB connection. The transfer of a digital recording of an intermittent auscultation provides clinicians a number of distinct clinical benefits.

Retrospective Review

Auscultations are sometimes performed under challenging circumstances. Our Sonicaid Software Solution allows you to retrospectively review individual FHR traces at a convenient time.

Training

The software solution provides an intuitive clinical database and stored traces can be easily accessed for case review, expert referral and clinical training.

Documentation

The Sonicaid Software is designed to be a robust reviewing and archiving solution for a mother's pregnancy record. FHR traces can be reviewed, also PDF reports can be generated for sharing or to form part of a physical patient record.

The Sonicaid Doppler SR range is compatible with all Sonicaid software and as a result all auscultations throughout a pregnancy can be stored and easily accessed.



Speak to us today to find the right Sonicaid software package for you



Technical Specification

Product Features										
Product Order Code	SR2R	SR2	SR3R	SR3	SRXR	SRX	FD1	FD3	D920	D930
High Resolution Colour Display	•	•	•	•	•	•			LED indicators	LED indicators
FHR Big Numbers	•	•	•	•	•	•	•	•		
Trace Display	•	•	•	•	•	•				
LCD FHR Display							•	•		
Probe Frequency	2MHz	2MHz	3MHz	3MHz	2 / 3MHz	2 / 3MHz	2MHz	3MHz	2MHz	3MHz
Fixed Waterproof Probes	•	•	•	•			•	•	•	•
Noise Reduction	DDNR	DDNR	DDNR	DDNR	DDNR	DDNR	Active	Active	Active	Active
Micro SD Card Slot **	•	•	•	•	•	•				
User Adjustable FHR Threshold Indicators	•	•	•	•	•	•				
15-Minute Labour Observation Timer	•	•	•	•	•	•				
Record, Playback of FHR & Sound	•	•	•	•	•	•				
Integrated Loudspeaker	•	•	•	•	•	•	•	•	•	•
Headphone Output	•	•	•	•	•	•	•	•	•	•
Micro USB Capability	•	•	•	•	•	•				
Battery Type Supplied as Standard	2 x AA Rechargeable batteries	2 x AA Alkaline batteries	2 x AA Rechargeable batteries	2 x AA Alkaline batteries	2 x AA Rechargeable batteries	2 x AA Alkaline batteries	2 x AA Alkaline batteries	2 x AA Alkaline batteries	2 x AA Alkaline batteries	2 x AA Alkaline batteries
110 - 240 V Medical Grade Recharging Kit (supplied with country adaptors)	•	◦	•	◦	•	◦				
Battery Life (no. of 1min exams)	Over 700	Over 700	Over 700	Over 700	Over 700	Over 700	Over 600	Over 600	Over 800	Over 800
Carry Bag Included	•	•	•	•	•	•				
Warranty	3 years (1 year on probes and accessories)									
Weight (with probes)	310gms (11oz)									
Dimensions (Main unit)	Height 140mm (5.5") Width 75mm (3.0") Depth 30mm (1.2")									

• Standard ◦ Option ** SD card ordered separately

As a proud member of the Arjo family, we have been committed to supporting healthcare professionals in improving outcomes and enhancing patient wellbeing since 1979. We do this through our proven solutions for Vascular Assessment & Treatment and Fetal & Patient Monitoring. With innovation and customer satisfaction as our guiding principles, we strive for clinical excellence and improved performance, for life.

Manufactured and distributed by Huntleigh Healthcare Ltd.
 35 Portmanmoor Road, Cardiff, CF24 5HN, United Kingdom
 T: +44 (0)29 20485885 sales@huntleigh-diagnostics.co.uk
 www.huntleigh-diagnostics.com

Registered No: 942245 England & Wales. Registered Office:
 ArjoHuntleigh House, Houghton Hall Business Park, Houghton Regis, Bedfordshire, LU5 5XF
 ©Huntleigh Healthcare Limited 2019

A Member of the Arjo Family
 As our policy is one of continuous improvement, we reserve the right to modify designs without prior notice.

AW: 1001043-4